

MC MODEL LTD

Your Professional Manufacturer !!!



MC MODEL LTD (HubProto) is an experienced manufacturer in China specializing in small batch and mass production with a focus on precision.

MC means MULTIPLE CONTROLS on our products. We are committed to providing top-notch quality, in-time delivery, and competitive pricing to our clients.

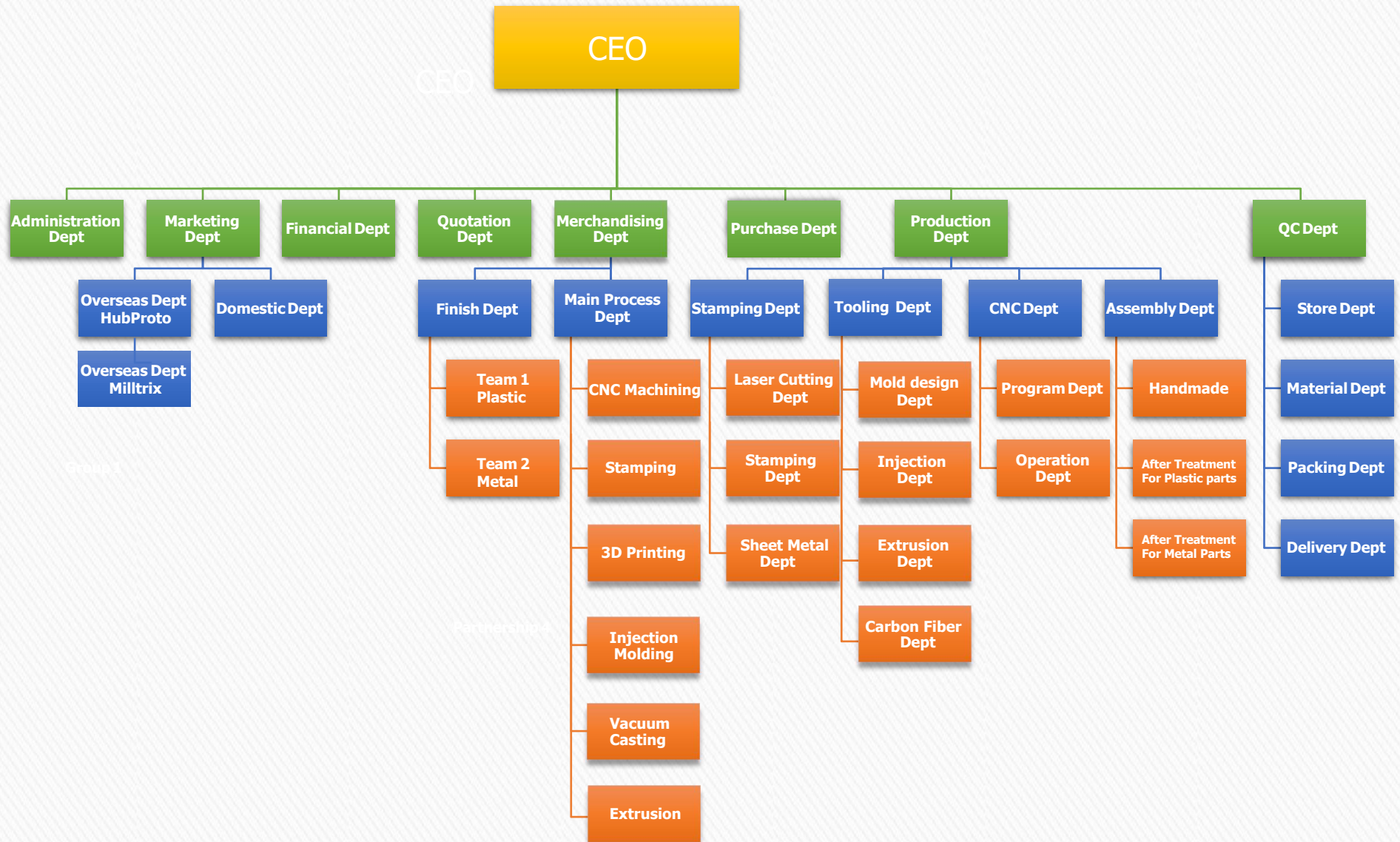
Our goal is to offer the best precision parts and help your projects move forward smoothly.

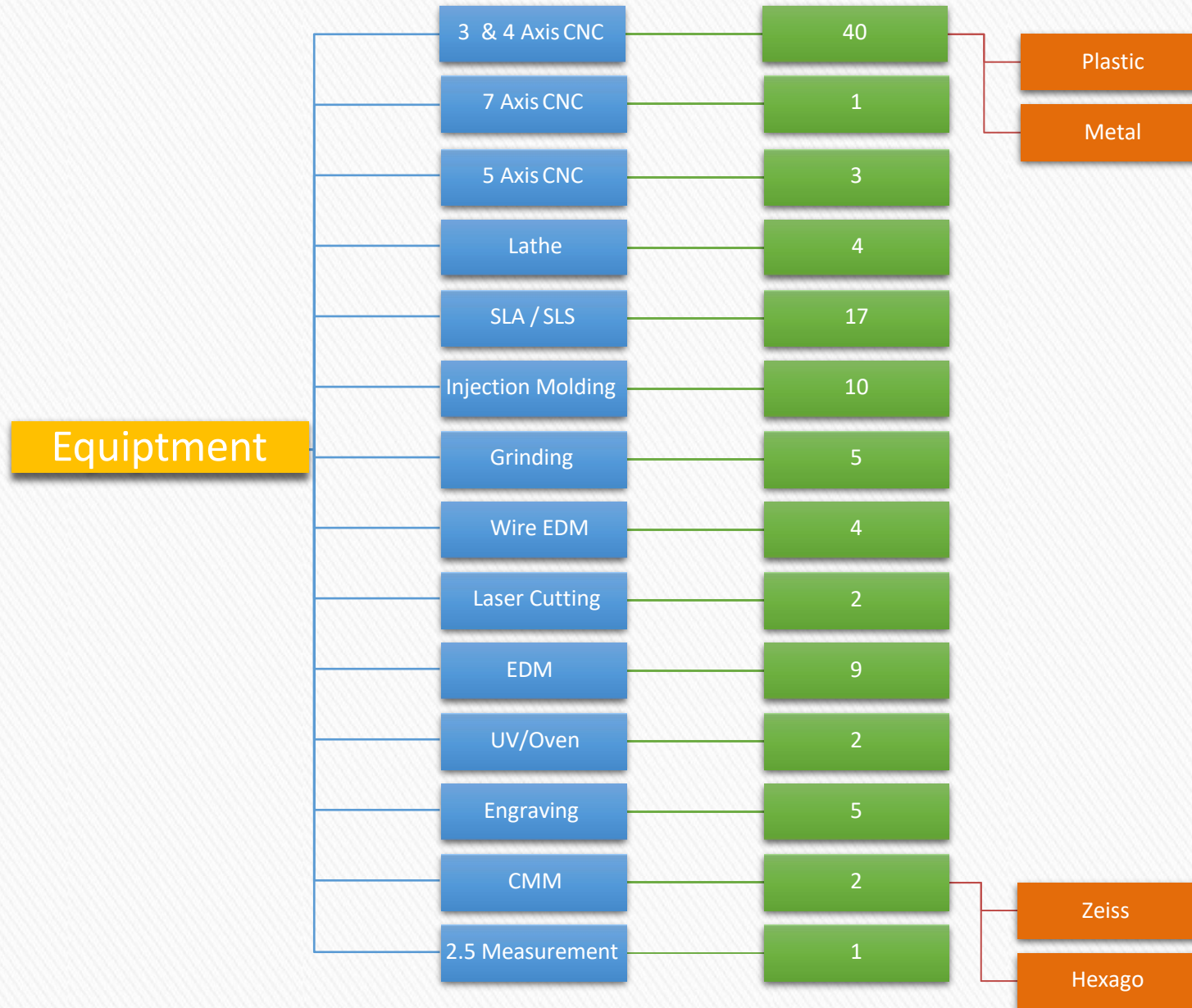
Our manufacturing processes encompass a wide range of methods, including CNC machining, EDM, Wire EDM, 3D printing, Vacuum casting, Injection Molding, Stamping/Sheet metal, Lathe, Extrusion, Hot Vacuum Pressing, Painting, Plating, Anodizing, Powder coating, Laser etching, Friction stir welding (FSW), Passivation, Polishing/Mirror Polishing/Transparent Polishing.

Our Advantage:

- Reasonable Price
- High Customizability
- Rapid Manufacturing

Welcome to cooperate with us !





Manufacturing Advantage

- ✓ Increase Speed to Market
- ✓ Short Manufacturing Turnover
- ✓ Support Multiple Design Iteration
- ✓ Quote Within Day!
- ✓ Design Better Parts
- ✓ Automated Design (DFM)
- ✓ Highlight Potential Issues
- ✓ Providing Immediate Solutions
- ✓ Reduce Risk
- ✓ Cost Effective
- ✓ Effectively Manage Inventory Cost
- ✓ Design Challenges & Offer Support



Benefits of Making a Prototypes and mass production

- ❖ Show your customers and investors a model of your product
- ❖ Demonstrate the appearance, dimensions and features of your product
- ❖ Test your design for its suitability
- ❖ Save time and money by identifying and reducing design flaws
- ❖ Improve and streamline the production process
- ❖ Reduce your work load when the time comes to manufacture
- ❖ Create multiple versions with different colors, surface textures and finishing processes

3D PRINTING

- ✓ Stereolithography
- ✓ Selective Laser Sintering
- ✓ Direct Metal Sintering

CNC MACHINING

- ✓ Milling
- ✓ Turning

SHEET METAL

- ✓ Laser cutting
- ✓ Wire cutting
- ✓ Bending
- ✓ Folding

INJECTION MOLDING

- ✓ Mold DFM/Flow report
- ✓ Mold design
- ✓ Mold making
- ✓ Injection

CARBON FIBRE

- ✓ Autoclave
- ✓ Compression Molding
- ✓ Filament Winding

CNC Machining

Quick-turn CNC machining works best for prototyping, form and fit testing, jigs and fixtures, and functional components for end-use applications. We have hundreds of high-speed CNC machines that manufacture parts on time, every time, so you can stay ahead of schedule.

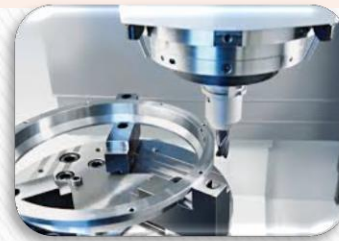
We use advanced equipment to offer you a variety of CNC machining services including milling, turning, EDM, wire EDM, surface grinding and much more. Using our imported 3, 4, 5 and 7-axis CNC machining centers, our skilled machinists can make turned and milled parts using a wide range of plastic and metal materials. Our CNC machining abilities also complement our 3D metal printing service making us a great one-stop-shop for your advanced designs.

CNC machining is great to meet a range of your product development needs. Here are some of the benefits of precision machining:

- Quick removal of large amounts of metal material
- Highly accurate and repeatable
- Suitable for many different kinds of substrates
- Scalable volumes from one to 100,000
- Low investment in tooling and preparation costs
- Economical & Fast turnaround

CNC Milling

Our CNC milling process produces custom Prototypes and end-use production parts in as fast as 1 day. We use 3, 4, 5-axis milling and 7-axis indexed milling processes to manufacture parts from more than 30 engineering-grade plastics and metals.

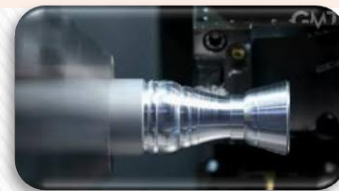


Best for

- Functional Prototypes
- Jigs and fixtures
- End-use components in lower volumes

CNC Turning

CNC turning with live tooling combines both lathe and mill capabilities to machine parts with cylindrical features from metal rod stock. Our CNC turning process produces custom Prototypes and end-use production parts in as fast as 1 day. We use a CNC lathe with live tooling so features like axial and radial holes, flats, grooves, and slots can be machined.



Best for

- End-use parts
- Parts with cylindrical features
- Parts with axial and radial holes, flats, grooves, and slots

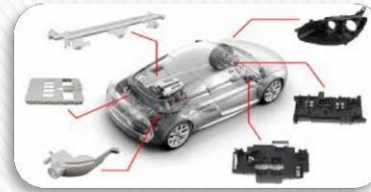
Injection Molding

Rapid injection molding works best for on-demand production, bridge tooling, pilot runs, and functional prototyping. Our affordable aluminum molds and quick turnaround times help reduce design risks and limit overall production costs.

Plastic Injection Molding

Plastic injection molding is a manufacturing process where resin in a barrel is heated to a molten state, then shot into a mold to form a final production-grade thermoplastic part.

Our plastic injection molding process produces custom Prototypes and end-use production parts in 15 days or less. We use aluminum molds that offer cost-efficient tooling and accelerated manufacturing cycles, and stock more than 100 different thermoplastic resins.



Best for

- On-demand parts
- Low-volume production
- Bridge tooling
- Pilot runs
- Functional prototyping

Liquid Silicone Rubber Molding

Liquid silicone rubber (LSR) molding is a thermoset process that mixes a two-component compound together, which is then heat cured in the mold with a platinum catalyst to produce a final LSR part.

Our liquid silicone rubber molding process produces custom Prototypes and end-use production parts in 15 days or less. We use aluminum molds that offer cost-efficient tooling and accelerated manufacturing cycles, and stock various grades and durometers of LSR materials.



Best for

- On-demand parts
- Low-volume production
- Bridge tooling
- Pilot runs
- Functional prototyping

Over molding & Insert Molding

Over molding and insert molding are two-part injection molding processes where one material is overlaid onto a second substrate part or metal insert to create a single multi-material component.

Our rapid overmolding and insert molding processes produce custom Prototypes and on-demand production parts in as fast as 15 days. We use aluminum molds that offer cost-efficient tooling, producing parts from a range of thermoplastic and liquid silicone rubber materials.



Best for

- On-demand production
- Bridge tooling
- Pilot runs
- Rapid prototyping

OUR MISSION AND VISION



At **MC MODEL**, we constantly find new ways to refine and speed up our manufacturing processes by doing things differently. We like to challenge and seek to find a better way. We like to strive towards reaching our full potential. Individually, within teams and as a company. We embrace traditional solutions to problems, we love to think outside the box, but thrive when we are able to innovate and can challenge the manufacturing status quo. We always innovate with our customer in mind. Our aim is always to realize our customer's vision and we do that with a team of qualified engineers and project managers that always have your best interest at heart.

At **MC MODEL**, we striving to provide a customized experience for every customer while achieving results that go beyond expectations. We have regular team dinners, sports events and training sessions, all in the interest in building up our teams to be the best they can be. And this starts with our community. We always put people first: from employees, to contractors, consultants and, of course, our inspirational customers. Every job is unique and so is every customer. Every day we help our customers create something for the first time. This constant innovation is what we all love. Our customers have big dreams and we are so proud to support them in that journey.

One thing our customers enjoy when visiting our facilities, is the chance to learn, first-hand, the details of the prototyping and manufacturing world. They get to see our world-class machines in action, talk to our international team of experts and see our inspection processes and testing equipment. Our customers enjoy this not only because they love to learn new things, just like us, but also because it gives them the extra bit of confidence and support they need when working towards their goals.

Our desire to innovate is only matched by our drive to be **cost-effective while never compromising quality.**

MAIN WORKSHOP



4 AXIS CNC MACHININGS



Mazak 5 Axis CNC
Accuracy +/- 0.002 mm

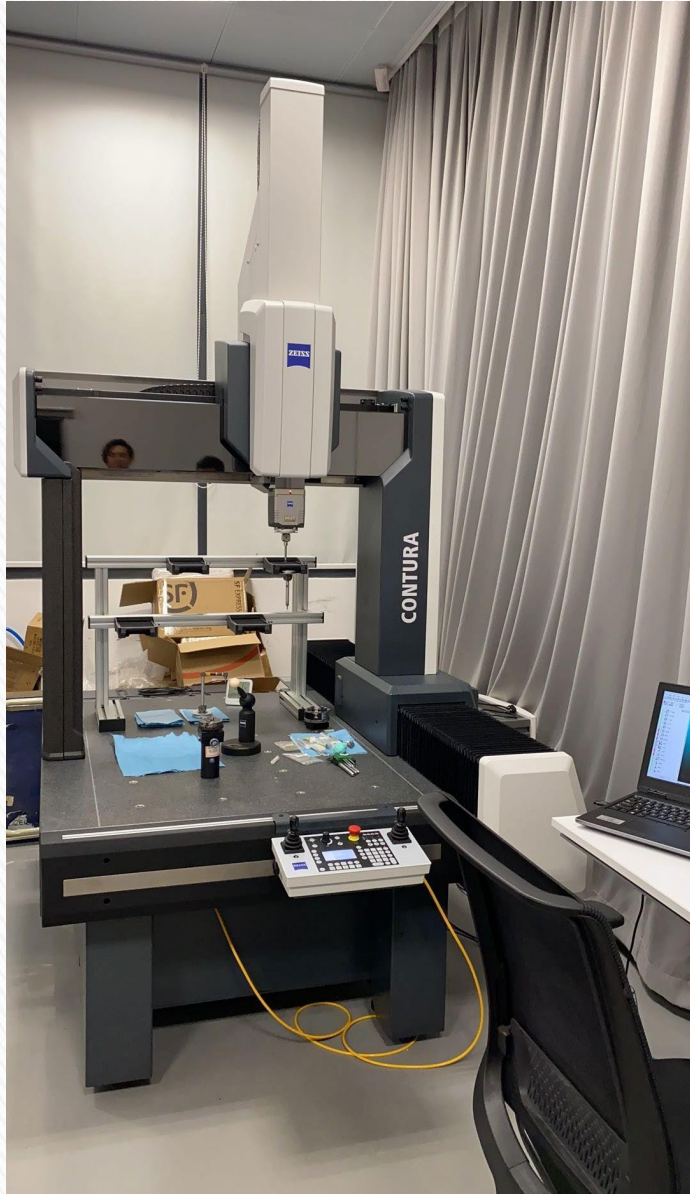


Okuma 7 Axis CNC
Accuracy +/- 0.001 mm



JTEKT Horizontal CNC
Accuracy +/- 0.0015 mm

MAIN INSPECTION EQUIPMENT



MAIN INSPECTION EQUIPMENT



SAMPLES



SAMPLES

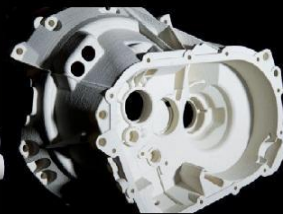


SAMPLES

3D – PRINTING - STEREOLITHOGRAPHY



3D – PRINTING - SELECTIVE LASER SINTERING



CNC – MILLING



CNC – TURNING



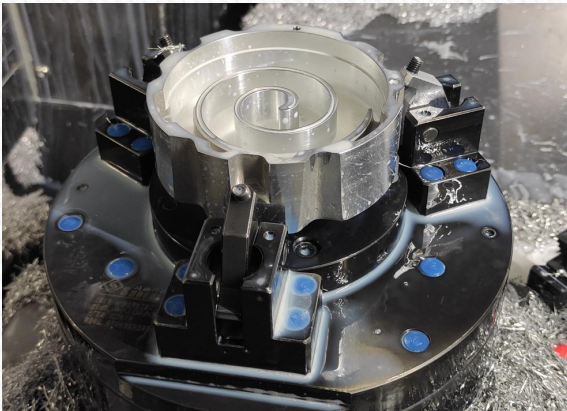
CASTING & MACHINING PARTS

SCROLL COMPRESSORS

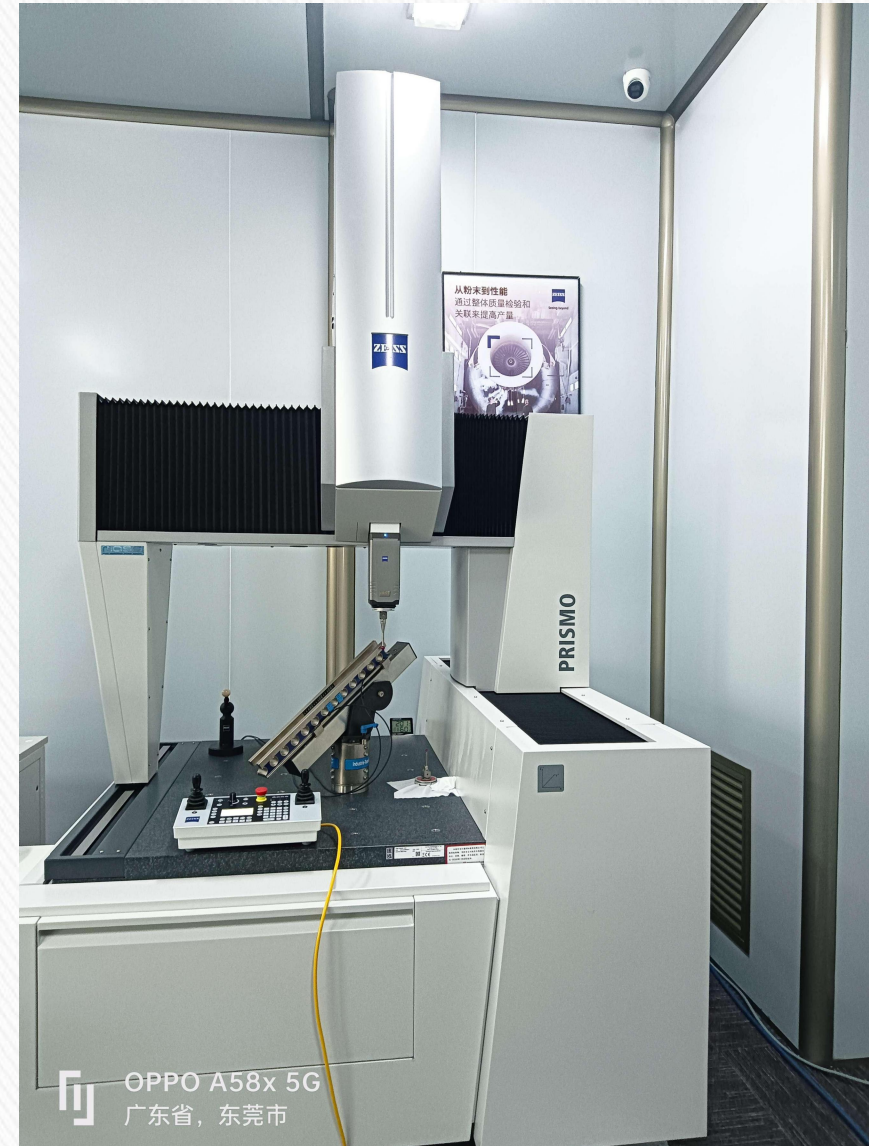
High Precision Machining

Zeiss CMM Inspection

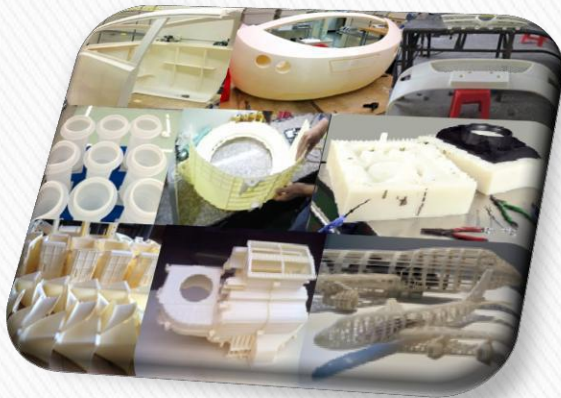
Fixed Scroll



Orbit Scroll



INJECTION MOLDING - PLASTIC



INJECTION MOLDING - OVER MOLDING INSERT MOLDING



CARBON FIBRE



KEY PARTNERS

DELPHI



KOSTAL



Customers All Over The World



Looking Forward To Our Future Partnership